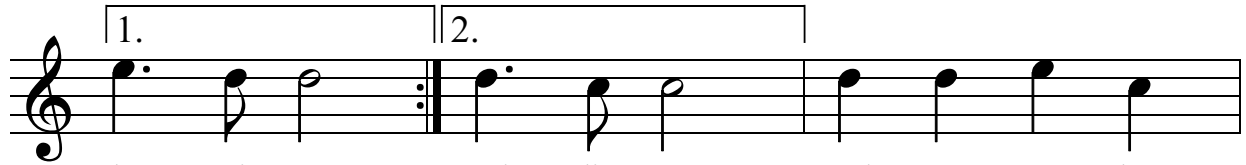


# Übung 31 - "Ode an die Freude" (L. van Beethoven)

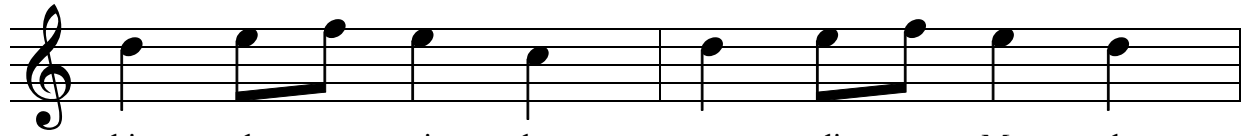
♩ = 110



Freu - de, schö - ner Göt - ter - fun - ken, Toch - ter aus E -  
wie be - tre - ten feu - er - trun - ken, Himm - li - sche, dein



ly - si - um, Hei - lig - tum! Dei - ne Zau - ber



bin - den\_\_\_ wie - der, was die\_\_\_ Mo - de



streng ge - teilt. Al-\_\_\_\_\_ le Men - schen wer - den Brü - der,



wo dein sanf - ter Flü - gel weilt.